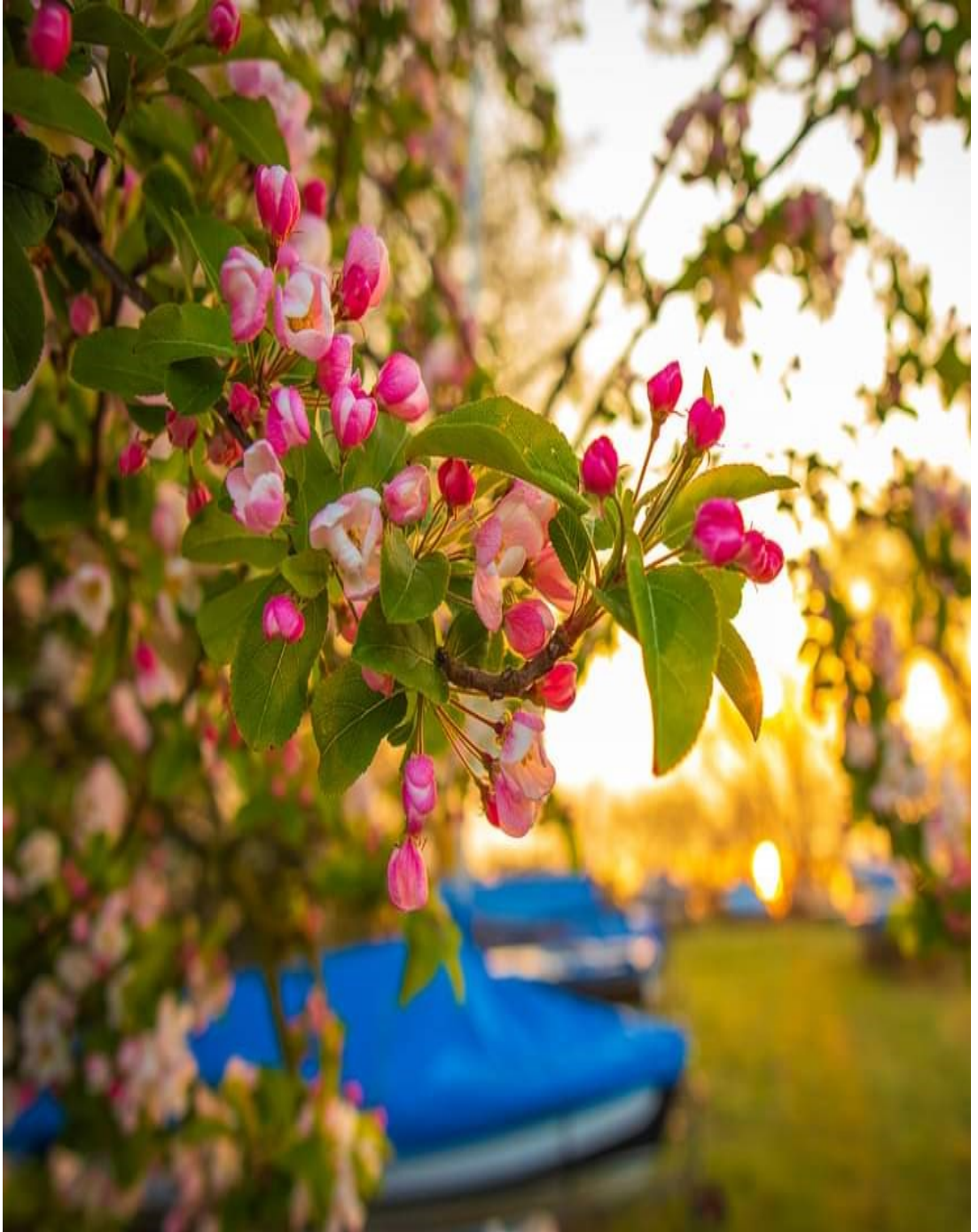


# Waldringfield

parish newsletter



## No.76—Summer 2022



*Photo—James Wilson, Waldringfield resident*



## Waldringfield Gardeners

Our big event for this season is **Open Gardens** – six very different gardens open to the public as part of the St Elizabeth Hospice Great Garden Trail on Sunday 29<sup>th</sup> May from 2.00 – 5.30. The event will have been a wonderful success by the time you read this – but we hope scarecrows and Hedge Love Letters will still be up until at least after the Jubilee celebrations.

**Looking backwards:** the hedge laying course in February did stalwart work along part of the Church Field boundary, but could not have a second go at it as the hedging had sprung from dormancy – more evidence of the shifting of seasons. But more will take place in the Autumn and Winter. Meanwhile the newly laid hedge looks beautiful!

The visit to Two Fields was a resounding success with a great deal to interest the visitors. The Waldringfield Tree Nurses (potting up found seedlings and growing from seed) were particularly interested in their large scale growing.

Our April visit to Hyde Hall had to be deferred – too many competing attractions!

**And looking forward:** June 16<sup>th</sup> evening visit to Kirton Allotments (the PC is due to discuss the need for allotments in the village at its next meeting), Permaculture in Newbourne on Saturday 2<sup>nd</sup> July, and a skill share on *Soil and its Critters* : date tba

And we hope lots of folks are urgently sowing and growing so as to have lots to share at **the Produce Show on Saturday August 20<sup>th</sup>**. There has been a high demand for sunflower seeds, which might be a good omen.

WG, WLG and GW overlap in their concerns and actions to a great degree, so look at WLG and GW too!

## Tree projects in Waldringfield

### Get involved in the Queen's Green Canopy Project

A free tree of your choice to celebrate the queens platinum jubilee!

If you've not yet signed up, it's not too late.

I have grant funding from East Suffolk's Nature First grant scheme to give every villager who wants one, a free tree of your choice. Native or not, fruiting or ornamental, whatever you fancy for your garden.

Each tree will be registered with the Queen's Green Canopy website.

The trees will arrive in November and will be small young trees to make the budget stretch as far as possible.

I've nearly allotted all of the current grant that I have but can apply for more if there are still more takers, so do let me know ASAP if you'd like to take part and have not already contacted me.

[Mariahskellorn@hotmail.com](mailto:Mariahskellorn@hotmail.com)



## **PPG NEWS FOR PATIENTS OF MARTLESHAM HEATH AND THE BIRCHES SURGERIES**

**May/June 2022**

In my February newsletter, I told you about the launch a new system of contacting the surgery called Ask My GP. This system isn't just a big change for patients, but also for those working at the surgery. It means everyone involved has needed to get used to a new system and some have found it easier than others. However, the practice managers reported back that the vast majority of patient feedback has been very positive. We shared some feedback we had received and the following tips may help:

- On the form you fill out online, you can type in whatever you need to say. For example, if you are not available to take a call at a certain time of day, you can add this information. Or if you need to request a blood test in, say, three weeks' time, you can request that.
- If you need clinical advice or treatment, you can expect a response the same day or the next working day. In the past, same day appointments were reserved for urgent matters, but now you can contact the surgery via this means for anything they could help with, on any day that suits you. It's best to do it on a day when you will be available to pick up the phone, or attend an appointment if invited to.
- For patients unable to use a computer, you can still phone in as before. The receptionist will enter your information on the same system as people doing it themselves, so you will get your response in turn with everyone else.

Another change is to do with the ownership of both practices. A few years ago, The Birches and Martlesham Heath practices joined a consortium called Suffolk Primary Care, creating a group of 11 practices with some centralised functions and a board of directors. However, the partners in our practices have decided to return to being fully independent, with effect from end July 2022. For patients, services will continue as before, so you probably won't notice any difference, but there will be a new website. The Martlesham PPG has offered to help with its development and a new patient leaflet.

Finally, there have been some staffing changes. A new partner called Dr Foyzur Miah has joined Dr Walter Tobias at Martlesham Heath surgery. Dr Cave has just left The Birches, so Dr Miah will also be seeing patients there. There will continue to be close working between the two practices. The PPGs have also seen some changes. Having been chair of the Martlesham PPG for nearly four years (and a member since it started in 2011), I am delighted to be handing over the chair to my colleague Tony Willmott. You can contact him on [MartPPG@gmx.com](mailto:MartPPG@gmx.com).

***Prue Denton***

***Martlesham Heath PPG***



# Waldringfield Sailing Club

Established 1921

The Sailing Club is looking forward to it's first normal year of post pandemic sailing and social activity. The Clubhouse is open and functioning normally.

Our first major event of the year, the 'Easter Egg' Open meeting, was a great success with over 80 boats racing under sunny skies – the only

downside was that the wind came in a little late on the second day and delayed the start, but overall a really great couple of days!



*Photograph courtesy of Alexis Smith*

The Annual Regatta weekend this year will be Saturday and Sunday the 2<sup>nd</sup> and 3<sup>rd</sup> July, with the traditional Yachtsmans' Service on the Sunday.

If you are interested to try sailing at the Club, please come down one Saturday afternoon or Wednesday evening and have a chat to one of the Flag Officers and see if there is anything that appeals.

Peter Mills— Commodore WSC

## WALDRINGFIELD PARISH COUNCIL

### Your Parish Councillors:

Ian Kay (Chair)

Janet Elliot (Vice Chair)

Serena Gold—Colin Reid

Colin Archer—Chris Lyon

Sue Quick—Paul Beaumont

*To contact the Clerk:*

**Jennifer Shone-Tribley**

Low Farm, Ipswich Road, Waldringfield, IP12 4QU

Telephone: 01473 736475

E-mail: [pc.waldringfield@googlemail.com](mailto:pc.waldringfield@googlemail.com)

**Next meeting: 14 June 2022**

**ALL PARISH COUNCIL MEETINGS ARE OPEN  
TO THE PUBLIC**

## A Tree Warden Writes



### Queens Green Canopy

Trees are in the news at the moment, especially re the Queens Green Canopy. Celebrate the Jubilee by planting a tree any time in 2022 and go onto the website in October to add it to the canopy. <https://queensgreencanopy.org/>

This could be one or more trees, a hedge or a whole wood. It could be in your garden, or a public open space (with permission). Schools are involved and all community groups are invited to join in. The Parish Council has planted an oak on the playing field, which was one of 60 supplied by Suffolk County Council to villages in Suffolk. In 1953 the Coronation oak was planted in front of the old village hall, hall now replaced but oak still there and going strong!

If you would like to take advantage of the funding Mariah Ballam has obtained for individual trees in private gardens (from the Nature First Small Grants scheme from the Greenprint Forum), Mariah will apply for you. There has been a good uptake up of this. Alternatively a tree you have grown yourself or bought in a garden centre would also be fine. It just needs to be planted in 2022, and you may have already planted one. The tree wardens are also growing lots of trees from local seed, which may be used to plant hedges in the autumn.

### Hedge poetry

Open Gardens is coming up in the village on 29<sup>th</sup> May and we thought it would be nice to celebrate our hedges by writing poems – or prose- in their honour and hanging it where it can be read by passers by. Hedges supply the means of existence to a myriad of creatures large and small, not forgetting the wild flowers growing along the hedge bottom. I do not have a hedge where anyone can see it so I will put a poem on a Church Field hedge, or playing field, and you are welcome to do the same! It needs to be laminated or in a plastic sleeve perhaps.

What trees and hedges do for us:

- Cool the air
- Fix carbon dioxide removing it from the atmosphere
- Help to remove air pollutants such as particles and harmful chemical pollution
- Provide shelter and food for many thousands of life forms with their leaves fruit and flowers- including us



*The elm hedge laid in February  
springing to life: Mill Road*

**Christine Fisher Kay, Tree Warden—01473 736384**

# Waldringfield History Group



We do not meet during the summer, but there is plenty of work continuing behind the scenes.

The 2020 vision project is gathering momentum, and Amanda Sims has loaded 3 blogs onto our website [Waldringfieldia.com](http://Waldringfieldia.com). Originally a questionnaire was delivered to all houses in the village. If you have been unable to complete the questionnaire until now you can still download it and send it back to us or if you just wish to share a photograph of you and your family outside of

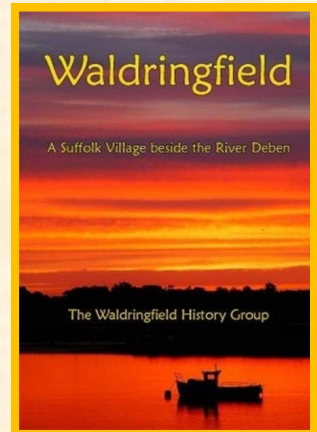
your house please send it to **Amanda Sims at [waldringfield2020@gmail.com](mailto:waldringfield2020@gmail.com)**

More snippets of information are being collected almost each week. They may be very small but usually will add something to the information already in our files.

Our book Waldringfield – **Waldringfield—A Suffolk Village beside the River Deben** – is still available online, from Golden Duck publishing at <https://golden-duck.co.uk/shop>; as well as most good bookshops.

Our first meeting is scheduled for **9<sup>th</sup> September** in the Kennedy Room, The Village Hall, 2pm till 5pm

If anyone is interested in joining us we meet on the 2nd Thursday of each month from September to March. For more information please don't hesitate to contact the Hon. Secretary Margaret Lake at [Waldringfieldhg@gmail.com](mailto:Waldringfieldhg@gmail.com)



## SEE YOUR ADVERT HERE

**TO ADVERTISE FOR AS LITTLE AS £12 PER QUARTERLY ISSUE**

***CONTACT THE PARISH CLERK***

***[pc.waldringfield@googlemail.com](mailto:pc.waldringfield@googlemail.com)***

**Next Copy Date – 15th August 2022**

**(for publication from 1st September 2022)**

## Waldringfield Church Field Trust

The trees at Church Field are now fully in their fresh new green leaves. There is a lot of bird activity in the hedges and gorse bushes with a band of sparrows making a racket, and skylarks are singing overhead. Now the swallows and house martins are back this is a good place to watch them catching insects.



The grass on the pitch and footpaths has been cut by Martin Spall, who has restored more of the paths so there are now more routes you can take. The goal post has been repaired and will soon be moved to a fresh spot .

Flowers are beginning to appear such as blue germander speedwell and lemon yellow mouse ear hawkweed. Ox eye daisies are opening up and butterflies and moths are about, so lots to see.



*Guelder Rose in flower*



*Germander speedwell*

***Christine Fisher-Kay***

## Update on Brightwell Lakes June 2022

I'm sure that most people will have noticed that significant earthworks are underway across the entire site and that some boundary trees have been removed to make way for the new "Western" access road off Ipswich Road. The temporary PROW closures still apply whilst this work is undertaken and are currently scheduled to reopen in August. The developer, Taylor Wimpey, has indicated that the PROW running beside the Ipswich Rd may well be re-opening in June. The Parish Council will chase the developer to deliver on this date.

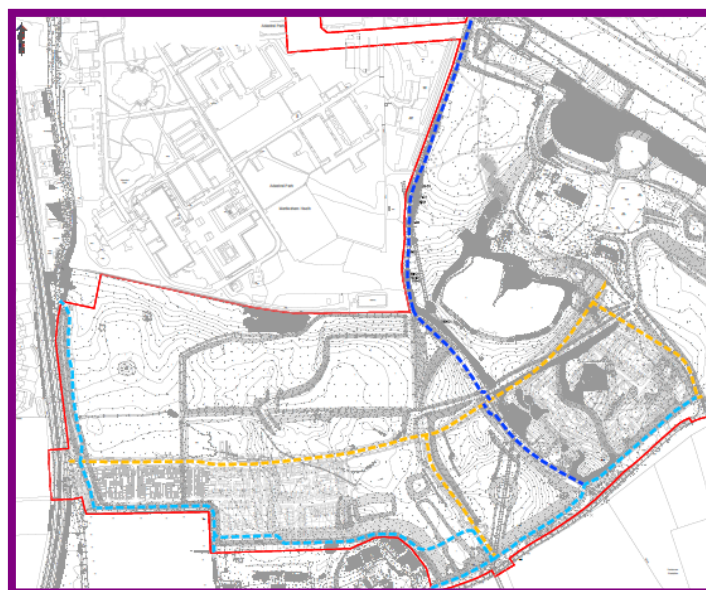
In our previous update we spoke about the detailed documents, known as Reserved Matters Applications, submitted by Taylor Wimpey relating to the land designated as plot E1 & E1a. This land sits immediately to the west of what will be the main access off Ipswich Road (the former quarry entrance) and will be the first area to be developed. The plan shows 120, mainly 2 storey dwellings of which 34 will be in the broad based "affordable" category.

These Reserved Matters Applications, DC/21/4004/ARM & DC/21/4005/ARM were approved by ESC Planning Committee on April 19<sup>th</sup>.

One aspect was held over for further consultation and examination. This was the requirement for the developer to submit a connectivity strategy for vehicles, cycles and pedestrians within these particular plots and how these would be integrated across the entire site and the wider network.

Waldringfield Parish Council has responded to point out that whilst a connectivity plan has been submitted it is too limited in its scope. It does not cover the entire site and does not show the connectivity links to the off site PROW network.

Going forward, we are concerned that Reserved Matters Applications relating to the future development phases will not automatically go to the ESC Planning Committee for determination. There will be approximately 12 phases over the anticipated 17 years of the development. So fewer than one set of applications per year. Members of the ESC Planning Committee indicated that they considered this to be too onerous a task for them.



*Submitted connectivity plan*

The Parish Council will however continue to monitor and respond to all of the applications related to the site. We will also continue to maintain regular contact with the developer and ESC Planners. We will of course keep residents updated regularly throughout the process.

All of the new submissions can be found on ESC public access planning pages under planning application DC/21/4004/ARM or by using this link

<https://publicaccess.eastsuffolk.gov.uk/online-applications/simpleSearchResults.do?action=firstPage>

Cllr Janet Elliot





# Councillor Vacancy

## Waldringfield Parish Council

Parish Councillors are elected every four years. When a vacancy occurs between elections, Councils may fill this by a process of co-option. Waldringfield Parish Council currently has a vacancy for a Councillor, for which all members of the community are welcome to apply.

The position of Councillor does not attract any remuneration. Councillors are expected to attend the monthly meetings of the Council. The role is varied and enables local people to use their skills and experience to enhance the work undertaken by the Council for the benefit of the community.

The Council wishes to invite interested people to contact the Clerk for an information pack, which details eligibility requirements and application requirements, or visit [www.beacouncillor.org.uk](http://www.beacouncillor.org.uk) for more information.

The Council is committed to achieving a balanced composition of Councillors that reflects the community of Waldringfield.

**Closing date: Monday 04 July 2022**

**Applications will be considered at the WPC meeting on: Tuesday 12 July 2022**

**Co-option meeting: Tuesday 09 August 2022**

If you are interested – please contact the Clerk:

**Jennifer Shone-Tribley - Clerk**

**Post:** Low Farm, Ipswich Road, Waldringfield, Woodbridge IP12 4QU

**e-mail** – [pc.waldringfield@googlemail.com](mailto:pc.waldringfield@googlemail.com)

**phone:** 01473 736475



# Greener Waldringfield

## Source to Sea Litter Quest February 22<sup>nd</sup> 2022

A small team this time, but we did a thorough clear up of the School Lane bridleway and the Ipswich Road between the Heath Crossroads and Stables Café at the Sheepdrift Farm – and the dangerous bit of road between the café and the layby. The last three photos are of the stuff at the layby- one of them helpfully itemising the final contents of



some of the bags. As always there are some puzzles – why would you carefully consolidate your rubbish into one bag and then chuck it into the countryside? In line with national findings but Source to Sea, City to Sea and other similar organisations, the pieces are smaller – or maybe we notice them more because there is generally less. And as usual it is mostly food containers..... only one bottle contained urine. And only one mask – though these have over the last year or so proliferated in urban areas.



One of us did a few stalwart metres of Free The Trees – we have over the last couple of years done most of the hedge along the Ipswich Road – but the guards are now very brittle and very well embedded into the ground. If you do decide to complete this bit (the footpath goes on the inner side of the hedge) take a kneeling pad, and an implement for easing the bottoms of the guards from the ground. And very many thanks to those who helped this time!

### **Next big clear up is October - Thursday 17<sup>th</sup>, 10.00 - 12.30.**

Our usual monthly meetings remain on the fourth Thursday of the month, but have moved to an earlier time slot – 5.30 – 7.00. We hope the clear end time – and meetings that don't eat the whole evening - will encourage attendance: everyone welcome, even for part of the time.

Greener Waldringfield presented an interim Climate Action Plan at the Annual Parish Meeting on April 11<sup>th</sup> – you can find the slides of this presentation on the GW website.

Only two of us did the **Star Count** - and only one of the results got properly logged - you can see 11 stars registered - which counts as moderate light pollution - sad for and AONB. Some of course is from Felixtowe, but much is from superfluous house illumination or security lighting. The good news is that nationally the light pollution is slowly declining from its 2020 high.

**Our policy of having a stall at the Coffee Morning** is generating increasing interest: March was on the losses caused by the expansion of palm oil plantations and the almost universal presence of palm oil in food, cosmetic and building products; April was about recycling and May saw a presentation of possible tree and hedge related actions with Christine Fisher Kay, our very experienced and dedicated Tree Warden, promoting the Queen's Green Canopy - there will be a stall at the Right Royal Romp to further encourage people to plant new trees and protect old ones – and hedges too. The village has been fortunate to access some Nature First money from the Greenprint Forum to fund trees that people can choose themselves and plant in their gardens – these will be logged on the national QGC website. We hope many other villagers will use the opportunity to plant – tree cover within the village has radically decreased in the last twenty years and we are going to need the trees to shade the road, reduce runoff from increasingly heavy rain and cool the atmosphere!

# Greener Waldringfield

**On Recycling** – the soundings we took at the Coffee Morning indicated it would be worthwhile for us to have a collection box for some of the many, many items you can drop off at Poppy's Pantry to be processed by Terracycle but which are not (yet) collected in your recycling bin. You can take soft plastic to supermarkets, batteries and printer cartridges to the school – but bring your blister packs (pill containers), all tooth cleaning stuff, pens (ballpoint and marker) and the netting bags for citrus or other fruit, and crisp packets to Coffee Mornings. One of us will take the box to Poppy's.

The next Coffee Morning stall on 02 June will be very specifically on **Waste and Composting** – Craig Renton, the Suffolk Waste Adviser has kindly agreed to visit, so your puzzlements about what and how to recycle can be addressed from the horse's mouth. And we will be further promoting Waldringfield Community Composting. You can follow this up with finding out what happens to what can't be recycled – the 'residual waste' in our black bins by joining our **visit to the EfW (Energy from Waste) plant at Great Blakenham** on the morning of Tuesday 14<sup>th</sup> June – places are still available.

GW was granted money to republish the Waldringfield Directory, which should be available in a couple of months.

**The Energy Survey:** Sally Hopper has done a detailed analysis of this which can be found on the Greener Waldringfield website. Groundwork, which provided the survey, found Waldringfielders to be better engaged and informed than most communities – but there is still much we could do, with pressure on fuel costs and the accelerating Climate Crisis making action more immediate and urgent.

GW is participating in monitoring the water in the Deben: a citizen scientist project by Woodbridge Town Council and Suffolk University. You see a brief video about it here. <https://fb.watch/d24PW-Am4m/>

And **talking of pollution** – the grass in Village Way has been sprayed with weedkiller yet again this year, in spite of almost annual agreements (usually post the event) with the contractors that it will not happen. The Parish Council agreed that the village should be a Pesticide Free area many years ago – see PAN (Pesticide Action Network for more about this initiative.) The Parish Clerk is dealing with this.

Our big event towards the end of the year is another **Repair Café on Saturday 15<sup>th</sup> October**. Since we had our first one the movement has grown – internationally and both locally and nationally.

Waldringfield is working in association with Martlesham and Woodbridge which hold repair cafes more frequently. Tim Eliot writes of a further initiative, a local version of the burgeoning Men's Shed or Mend Shed movement:

“A new organisation, the Suffolk Repair Shed, will support local Repair Cafes and repairers by providing a place for repairers to work together with tools and skills, in a safe and supportive environment, and a space for makers and designers to develop their own projects.

Situated in Martlesham, at the moment it's kitted out with woodwork, metalwork, mechanical, electrical, digital and leatherwork tools together with a wide range of general hand tools. Electronics and sewing equipment will be added shortly.”

Finally all who attended will have been grateful to the Village Hall Winter Talks programme for a second talk from Lord Deben who combines robust and unflinching confrontation of the stark realities of Climate Breakdown and Biodiversity Crash with optimism that it is not too late.



## New Playing field equipment

It had been known for some time that the play equipment on the playing field was in need of updating. So last year, the Parish Council conducted an online survey, which had 99 responses and we also held a focus group. There were many other conversations gathering anecdotal evidence, and the result was that the main need was for play equipment for older children, to complement the existing equipment for the younger children.

The Parish Council engaged with 4 contractors, secured 3 detailed quotes, and we selected the most appropriate and competitive to provide and install the new equipment. Our chosen supplier was *PlayQuip*, based near Colchester.

We decided on three new play structures: a 'Spacenet' (a large climbing challenge), a basket swing (suitable for children of all ages), and an Inclusive roundabout (suitable for children with disabilities).



*Installed Space Net*

The new equipment is now installed and will be officially opened at the Jubilee event on the 4<sup>th</sup> of June.

The Parish Council would like to thank the following for funding this project:

- a share of the Community Infrastructure Levy on buildings erected on fresh sites in the parish
- the Outdoor Playing Space Scheme (*East Suffolk Council*)
- The Felixstowe Community Partnership (*ESC Cllrs Richard Kerry and Mick Richardson*)
- Enabling Communities budget (*ESC Cllrs Richard Kerry and Mick Richardson*)
- locality budget (*SCC Cllr Patti Mulcahy*)
- a generous donation from a villager

I would also like to thank Colin Reid, Colin Archer and Joanne Doyle for their hard work in making this possible.

***Ian Kay, Chair, Waldringfield Parish Council***



*Installed roundabout*



*Installed Nest Swing*



Dear all,

The Parish Council and volunteers are pleased to formally announce the arrangements for the village event to mark the **Queen's Platinum Jubilee on Saturday 4th June 2022**.

## *"A Right Royal Romp!"*

**2-5pm on the Playing Field–Don't be late!**

- **Bring your own picnic** - drinks too. A few tables and chairs will be available, but do bring something to sit on, just in case.
- - **Jimmy Doherty** will open the event, and highlight the Jubilee tree. He will then be assisted by a child from the village, to formally unveil one of the 3 new pieces of play equipment.
- - This will be followed by **an interactive little pageant with King Rupert of Waldy** and his entourage. If you would like to take part, **come dressed as a courtier**, or other member of the Royal household. Perhaps a cook, a butler, or even a horse - let your imagination run free! Prizes will be given!
- - After this - **games** for the young and not so young.
- - There will be a **craft stall** for children to decorate their own crown.
- - **A photo "booth"** so you can capture your own photos of the event.
- - **An Ice-cream van** will arrive at sometime during the afternoon - listen out for the chimes!
- - An easy listening **5 piece jazz band** - "The Wednesday Men" (Musical Director Bernard Westren 07900477512), will play for approximately the last hour.

*Do join us on this special day.*

First aider on site.

Toilets and parking at the village hall.

**Note** - If wet, we will move to the village hall, but without the games.

**Kind regards, Chris Lyon**



*Right*  
**a Royal Romp  
Jubilee Picnic**

*Saturday 4th June*

*On The Waldringfield Playing Field*

*2 - 5pm*

**ACTIVITIES START AT 2.30PM**

**Jimmy Doherty will open the ROMP  
at 2pm**

**!! don't be late !!**

**\*FANCY DRESS\***

**GAMES & CRAFT**

**LIVE MUSIC & ICE CREAMS**



**Bring your own food & drinks**

**WC IN THE VILLAGE HALL**



## *The Platinum Jubilee 2022*

Waldringfield Parish Council is presenting a commemorative Platinum Jubilee fine china mug to every child under 17 living permanently in the village in June 2022. The mug has an authorised traditional design with the Queen's portrait on one side and the Waldringfield logo on the other.

Children in the primary school will be given their mugs on 26th May. Mugs for other children resident in the village (and under 17 this June) may be collected from the school office on presentation of a completed application form (as below).



The School has ordered some extra mugs that will be available for sale from 27th May onwards. These may be ordered in advance by submitting the form below and presenting this at the school office.

Orders will be dealt with from 27th May in order of receipt. Payment may be made by credit card. On collecting the mugs from the School Office.

Any remaining mugs will be available at the School's Summer Fair on 25th June 12 noon - 2 pm. Any proceeds will go towards the Waldringfield School Association.



**Application for free mugs for children under 17 who are permanent residents of Waldringfield in June 2022**

Name(s) of Children:

---

---

---

Ages:

---

Address:

---

Telephone: \_\_\_\_\_

**Application for purchase of additional mugs**

Name: \_\_\_\_\_

Address: \_\_\_\_\_

---

Telephone: \_\_\_\_\_

Quantity of Mugs: \_\_\_\_\_ @ £6.00

Total: \_\_\_\_\_



# WALDRINGFIELD GARDENERS

## **VEGETABLE, FLOWER & CRAFT SHOW**

**SATURDAY 20<sup>th</sup> AUGUST 2022**

WALDRINGFIELD VILLAGE HALL

**ENTRIES TO ARRIVE BETWEEN 11.00am – 12.45pm**

ENTRY FEE FOR EXHIBITORS: 25p per class.

*Only 1 entry per person, per class.*

Please read the rules.

**JUDGING from 1.00pm**

(Closed to the public)

**OPEN TO PUBLIC 4.00pm**

FREE ADMISSION - REFRESHMENTS AVAILABLE

***"The People's Choice"***

*Vote for your favourite entry in the show.*

**AUCTION OF PRODUCE 5.00pm**





# VEGETABLE, FLOWER & CRAFT SHOW

## RULES

This show is open to all 'home grower' residents of Waldringfield, Hemley, Newbourne and their children. Grandchildren of residents who stay in the 3 villages are also welcome to enter.

**Please use a separate 'entry form' for each person.**

### VEGETABLES AND FRUIT

- To be displayed on your **OWN WHITE plates**, china or cardboard & **OWN TRAY**.
- Please label or mark **your china plates, trays, bread boards & vases** on the underneath with your name or phone number. (In case of loss) - **DO NOT** put your name visibly on any item.
- **ALL FOOD** to be **COVERED** with a plastic box, wrap, cling film etc.

### DECORATED CAKES / PIES

- May be displayed in a clear see through container with a lift off lid.

#### \* Recipe for 7" Victoria sponge\*:

6oz flour / sugar / butter, 3 eggs, red jam only - no cream.  
*Only a light dusting of caster sugar on top, no decorations.*

### BREAD

- To be displayed on your **own breadboard**.

**Photos:** Please put the class 'P number' on the back of your photo.

*If you do not wish your items to go into the auction please put 'N' on your entry form beside the class number.*

Our **AGM** will be held on Wednesday 23<sup>rd</sup> November 2022  
Membership is £5.00— November– October New members welcome.

Community fruit pressing equipment is available to hire.  
Free to members, contact Betsy Reid 736506

### VEGETABLES

- V1 Aubergine
- V2 Beans French-3
- V3 Beans Runner-3
- V4 Beetroots-3
- V5 Carrots-3
- V6 Chard leaves-3
- V7 Chillies-3
- V8 Courgettes-3
- V9 Cucumber
- V10 Garlic bulbs-3
- V11 Kale leaves-3
- V12 Onions-3
- V13 Peppers-3
- V14 Potatoes – white skin-3
- V15 Potatoes – red skin-3
- V16 Squash
- V17 Sweetcorn
- V18 Tomatoes with calyx on-3
- V19 Tomatoes cherry with calyx on-3
- V20 Tomatoes plum with calyx on-3
- V21 Any other veg not listed above
- V22 Plate of 5 mixed vegetables
- V23 Tray of 10 mixed vegetables

### NOVELTY

- N1 Funniest shaped vegetable
- N2 Heaviest potato
- N3 Longest runner bean

### FRUIT

- F1 Apples cooking-3
- F2 Apples eating-3
- F3 Grapes -bunch of
- F4 Pears-3
- F5 Plate of 5 Mixed fruits
- F6 Plums-3

### HERBS

- BH1 5 herbs (labelled) in a small vase or jam jar
- BH2 Pot of growing herbs

### PRODUCE

- PJ1 Jar of chutney
- PJ2 Jar of fermented vegetables
- PJ3 Jar of honey
- PJ4 Jar of jam - berry
- PJ5 Jar of jam - currant
- PJ6 Jar of jam - any other fruit
- PJ7 Jar of jelly
- PJ8 Jar of lemon curd
- PJ9 Jar of marmalade
- PJ10 Jar of piccalilli

### BAKING

- B1 Decorated cup cakes-3 (decoration only to be judged)
- B2 Fruit cake
- B3 Vegan or gluten free cake (please list your recipe)
- B4 Victoria sponge cake \*(to given recipe)\*
- B5 Fruit scones-3
- B6 Biscuits-3
- B7 Buns made with a sweet yeast dough-3
- B8 Hand-made brown loaf
- B9 Hand-made white loaf
- B10 Hand-made sourdough loaf
- B11 Cheese scones-3
- B12 Quiche Savoury
- B13 Raised Pork Pie
- B14 Sausage rolls-3
- B15 Scotch eggs-2

*Food to be covered with cling film, plastic box, etc.*

\*\*\*\* **Please bring your own white plate, tray, bread board, vase, jam jar. \*\*\***

### FLOWERS:FROM YOUR GARDEN

- GF1 Arrangement in an unusual container
- GF2 Arrangement of 5 flowers with foliage
- GF3 Buttonhole for a Lady or Gentleman
- GF4 Cactus or Succulent in a pot
- GF5 Pot plant in your care (for at least 2 years)
- GF6 Pot plant grown from seed or cutting by you
- GF7 Single flowering stem in a vase (No roses)
- GF8 Single rose in a vase
- GF9 Three stems of the same flower in a vase
- GF10 Vase of cut flowers – natural foliage allowed

### HANDICRAFT MADE BY YOU

- H1 A short poem about the garden or gardening (maximum 20 lines)
- H2 Bees Wax item
- H3 Crocheted item
- H4 Drawing - any medium
- H5 Jewellery item
- H6 Knitted item
- H7 Needle-felted item
- H8 Needlework item (sewn by hand or machine)
- H9 Painted picture
- H10 Paper or Card item
- H11 Upcycled / Recycled item
- H12 Wooden item
- H13 Your other handmade item

### PHOTO (MAX SIZE A4)

- P1 Activity on the river
- P2 View in the village
- P3 View of the river
- P4 Wildlife in the village/river

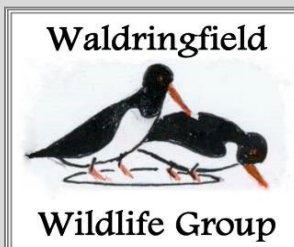
### CHILDREN ONLY

- C1 Animal made from fruit & / or vegetables
- C2 Decorated Stone
- C3 Mini garden on a plate
- C4 Poem about your pet (maximum 20 lines)



## Waldringfield Wildlife Group

### Waldringfield Swifts:



### A Date for your Dairy

**Waldringfield Swift Walk and Talk led by Eddie Bathgate (Save Our Swift Project SOS) Friday 24<sup>th</sup> June 7pm meet Driftwood Garden, The Quay.** Starting with a talk and a Q&A session with Eddie we will walk around Waldringfield, observing known nest sites, looking for more and taking note of the installed nest boxes.

### The Swifts' Return

For the past few weeks the returning swifts have been making their way from West Africa, across the Sahara, through Morocco, Spain and France. This year it was reported that northerly winds over the Pyrenees slowed the swifts passage to the UK but by the 4th May we had our first reported sightings over a garden in Fishpond Rd, followed by more sightings on 9<sup>th</sup> May, above Deben Lane and lower Cliff Rd (last year it was the 6<sup>th</sup> May.) There were similar sightings from all parts of Woodbridge. There have been regular sightings of 6/7 swifts over Deben lane/Cliff Rd and 2 flying over Sandy Lane, close to Orchard Cottage and Nova Castria, Keep looking skywards, last year swifts were sighted above School lane, School Rd and Fishpond Rd as well as above lower Waldringfield. At the time of writing 16/17<sup>th</sup> May swifts are flying very close to Driftwood swift boxes, clinging on to look inside the entrance hole.

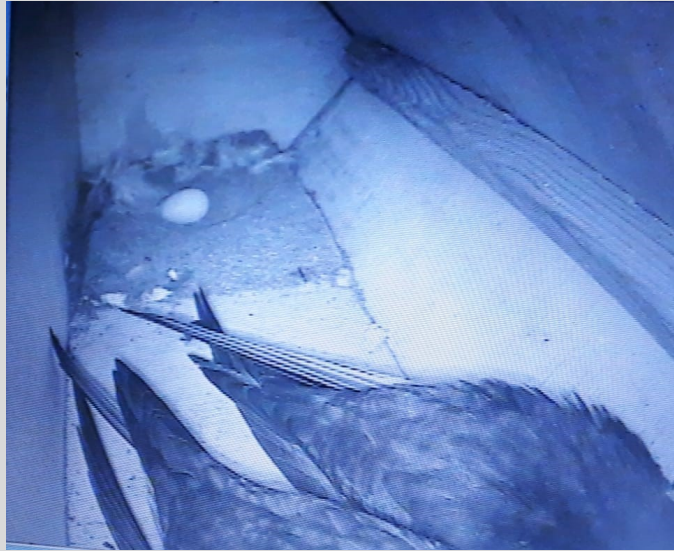


*breeding Swifts who are nesting this year in Suffolk swift nest boxes*

### Swift Boxes and Swift Call Sound Systems:

Last year a concerted effort was made by Waldringfield residents to provide nest sites in the village for Swifts by mounting swift nest boxes on their houses providing an alternative to the more traditional nest sites under eaves and roof tiles where access has been closed off due to refurbishment and building restoration. With the support of AONB and SOS along with many other Suffolk towns and villages we had a second wave of nest box and call sound installation, with sets of 6 boxes installed at Church Farm and School Rd. Boxes have been installed at Rivers Hall, Fishpond Rd and Deben Lane and additional ones added to existing sets in School rd. Residents of Hemley Hall cottages came together to work with WWG installing a further 10 swift boxes on their gable walls with one integrated call sound system to share between them.

## Waldringfield Swifts:



*First Swift egg observed 18 May*

Now is the time for the playing of the Swift call sound systems to show the swifts where the nest boxes are. Playing them now may help to attract any displaced swifts whose nest site has been lost. From the end of the month until July there will be waves of new arrivals of prospecting juveniles investigating potential nest sites for when they start breeding at the age of four years. You will not be able to miss the sound and sight of their screaming parties as they whizz by and upwards. The volume of the calls can be adjusted and swift box owners will take account of neighbours' sensitivities adjusting the timing and volume of the call sound accordingly. When you take a walk in the morning or evening listen in to see if you can distinguish the calls from the orchestra of bird song around the village. Calls need to be played from early May until end of July. It is thought that 7-9am and 6-9.30pm are the best times but the more the merrier during good weather.



### **SOS Swifts Whatsapp Group:**

If you have swifts nesting or have a swift boxes and call sounds installed and want to be part of the Whatsapp group run by Eddie Bathgate to get all the up to date information on swifts in Suffolk please text him on 07368334520 and he will add you to the group. It's an excellent way of getting the latest swift news.

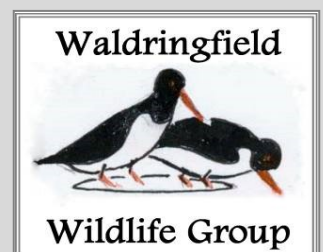
### **Swift Mapper APP:**

It's very important to record any swift nest sites by downloading the Swift Mapper App on your phone. It's easy to use and feeds into local records for use by Suffolk's planners when issuing planning permissions and will insist on nest bricks/boxes if there are records in the area.

Linda Wilkins

Coordinator WWG

<https://greenerwaldringfield.org>



# Swift, swallow or martin?

Have you spotted some beautiful silhouettes darting and diving in the summer sky? Swifts, swallows, house martins and sand martins are all summer visitors to the UK. Here are our top tips to work out what you might have spotted!

Seen in large aerial acrobatic groups, wheeling above roof tops and out of house eaves

## Swifts



Long, curved wings, like a boomerang

Dark brown all over with a pale patch on the throat

Call to each other in high-pitched screams

**NEVER** seen perching on wires or fences

Largest of the four birds

## Barn swallow

- Long, forked tail
- Pale underbody with a red throat and dark face
- Seen perching on wires in farmlands and small villages
- Chattering bird call
- Large roosting groups in reedbeds



## House martin

- All white underbody with no dark band
- Build mud cup nests under house eaves
- Seen visiting puddles to collect mud
- Spotted around towns and villages



## Sand martin

- All white underbody with a dark band across the breast, separating the belly from the throat
- Nest in burrows built into sandy banks
- Often seen flying low over water





Waldringfield



Wildlife Group

## WWG PROGRAM FOR 2022

June 11 <sup>th</sup>	Illustrated talk by Hawk Honey 'Wasps : Malicious or Misunderstood?' (more details below)
June 24 <sup>th</sup>	Waldringfield Swift Scout talk and walk 7.00pm with SOS Eddie Bathgate. Start from Driftwood garden
July 31 <sup>st</sup>	Joining with the Suffolk Branch of Butterfly Conservation at The Priors Oak Butterfly Garden, Aldeburgh. Come and go as you please. No entrance charge, donations welcomed. Refreshments available.
July/Aug (tbc)	Summer Picnic
October 8 <sup>th</sup>	<b>AGM</b> —An illustrated talk by Cathy Smith of Suffolk Wildlife Trust on 'Gardening for Wildlife and Pond Creation and Restoration
December 10 <sup>th</sup>	Professor Peter Hobson, Writtle College: A presentation on Reclaiming the Lost Natural Environment - wildlife corridors, responding to climate warming and biodiversity loss ,followed by our members bring & share Christmas lunch

More event details to follow: Guided tours of nearby Suffolk Wildlife Reserves: Identifying moths in our gardens and scouting for glow worms !

Statement Covid safety : Please do not attend if you or a member of your household test positive or are feeling unwell. Use the hand sanitiser at the door. Chairs will be spaced out in this larger venue and will be ventilated, wear warmer clothes. As you will be aware, this virus has not gone away and there is still a risk of passing on infection. So we would ask everyone to act in a way which protects the safety of others, particularly those who still feel vulnerable. For example, we should avoid having too many people close together indoors, and maintain some level of distancing.

## Wasps, Malicious or Misunderstood !

Other than being picnic spoilers, what else do we know about them? Do they really sting out of maliciousness & do we really understand them?

By Hawk Honey

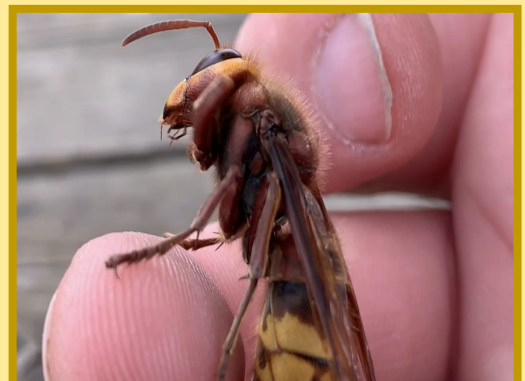
Saturday 11<sup>th</sup> June at 11.00 am

Waldringfield Village Hall

Admission: Non-members & Visitors £3.00

Paid up Members no charge.

Preceded by a Members meeting at 10.00 am prompt start. New members welcome (Membership £10) Enquiries: Linda 736044



# CLIMATE ACTION ANECDOTES

When we first moved to Waldringfield, I was impressed with the number of solar panels I could see, the amount of space given to wildflowers and wildlife, the opportunities to recycle, the composting systems, the Waldringfield Parish Council had declared a climate emergency... And at the same time, the news is full of increasing evidence of climate change/temperature rise, species and habitat loss, the drop in water quality...

How should I respond to this? Life is comfortable, change is a challenge. What are my options?

Should I bury my head in the sand and stop listening to the news?

Worry myself literally sick about what seems to be coming?

Should I join XR?

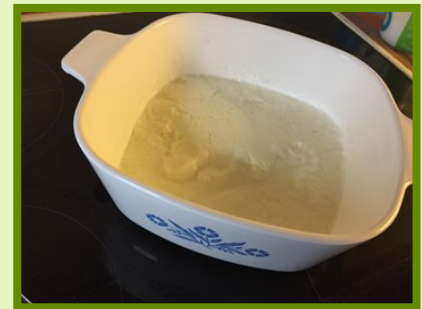
Can I institute some step-by-step changes to my lifestyle to better support the planet?

I am trying the fourth option. I have asked neighbours to tell me what they are doing already and there is a lot to celebrate. Here are a few of the Climate Action Anecdotes I have collected so far.

## Low Tech Ideas

### Cutting Down on Single use Plastic

We eat about 1 1/2 litres of yogurt every week and I felt appalled by the pot recycling, so after some research and the gift of a lovely book on fermented milk products, I have made my first batch of yogurt—and all with things I had in the house. I used a sugar thermometer and a little corning ware casserole, an old polystyrene cool box, towels and jars of hot water to maintain the incubation temperature. And it is smooth and delicious. The next step is to increase my glass bottle milk delivery and get into a making routine.



### Indoor Laundry Drying



We have brought this ceiling mounted pulley ainer with us when we have moved house over the past 40 years. Siting it has taken some thought, but this placement on the landing, half over the stairs, dries the laundry, wet suits, sails, etc, all year round, making full use of the warm air rising through the house. The stair side drop accommodates longer items.

We “found” this one in a house being cleared so £00.00 initial outlay and no calculable payback. Here is a link to a website that sells new versions, very reasonably priced in comparison to a tumble dryer:

[https://www.clothesmaid.com/?gclid=EAlaIqobChMIInbaexe309gIVjbTtCh29mA33EAAYASAAEgKROfD\\_BwE](https://www.clothesmaid.com/?gclid=EAlaIqobChMIInbaexe309gIVjbTtCh29mA33EAAYASAAEgKROfD_BwE)

### Outdoor Drying Line

One of the boring household tasks transformed into a lovely outdoor one - and the washing smells so beautiful! In windy Waldringfield it's often blow dried too - and so straight it's almost ironed in the process. All you need is a tall pole - above plant level - and line.



### Cooking in Multiples

Beans can be placed in the bottom of the pressure cooker, and then a second, third, fourth and fifth lot of pulses can go above in their own stainless steel bowls-- so five lots cooked in one go for about a third of the time it would usually take. Ready for soups and stews and salads for the rest of the week.



### High Tech Ideas

#### Thoughts on an Air Source Heat Pump

My house has an air source heat pump for hot water and heating the radiators during the cooler months .

I have a solar thermal panel that provides hot water during the summer months May - Sept.

I have been very pleased with the heat pump, and find it very simple to run.

I have wireless thermostats on the larger radiators, this allows me to control the temperature for each room independently, via a Honeywell controller. The Honeywell controller interfaces to the heat pump controller telling it when each room needs heating. Once the regime is in place, no adjustments are needed, I don't have to adjust thermostats or switch the pump on/off until the seasons change.

I have experimented with using different temperatures for the radiator circuit water from 40 to 50 degrees C, and I have also experimented with different target temperatures for each room during the day and night.

Currently I set a target temperature of 19 or 20 degrees C for rooms when I know people will be awake, and around 16-17 during the night hours, and the radiator circuit water temperature is set to 40 degrees C.

This arrangement results in the lowest electricity consumption I have achieved so far.

The idea is that by maintaining the whole house at 16-17 during the night hours, the heat pump consumes less electricity when raising the temperature to 19 or 20 degrees for the daytime.

The precise temperatures that will work for another house will depend on the levels of insulation, and so the rate of heat loss from the house. ([sallymugford@gmail.com](mailto:sallymugford@gmail.com)). If you'd like to see it in operation, please contact me, or if you are looking for more information, the Greener Suffolk web site Advice Sheet is [here](#)."

#### Solar Panels

Twelve 345 Watt solar panels and a battery were installed at Japonica Cottage--outlay £8800.



In the first month after installation, consumption from the National Grid was reduced by 35% compared to the average consumption for the previous winter months.

In the first 37 days after installation, the panels generated the equivalent of 16 days' winter usage of electricity (43% of normal usage).

Payback time would be 18 years at costs as they have been in the past year. However, as costs increase up to 150%, payback will be reduced to 7 years.

I would love to know what other neighbours are doing. Please send your anecdotes to [mbskellorn@gmail.com](mailto:mbskellorn@gmail.com).

Mary Beth Skellorn on behalf of Greener Waldringfield





Waldringfield Baptist Church  
Newbourne Rd  
Waldringfield  
Ipswich  
IP12 4PT

01473 736285


[WWW.WALDRINGFIELDBC.ORG.UK](http://WWW.WALDRINGFIELDBC.ORG.UK)

# FRIDAY YOUTH CLUB

TERM TIME \_\_\_\_\_

**MAR25-JUL15**  
**7:30-9PM**

FOR AGES 11-16



- Tuck shop
- Games & activities
- Bible talk
- Meet friends
- Pizza night
- Beach evening



*Waldringfield*  
BAPTIST CHURCH

BAPTIST CHURCH

