



No. 68—Summer 2020

Message from the Chairman of the Parish Council

It has been wonderful to see how villagers have come forward to help one another during the present situation, and I would like to thank residents for complying with Government Guidance during the Covid-19 pandemic. The Parish Council distributed a leaflet at the beginning of April with the names of many volunteers who had then come forward. Copies of this can be found in the entrance to the Village Hall. Steve James has also offered this contact number for people needing help: **0333 335 5301** – more information can be found on the Waldringfield Community Hub: <http://waldringfielders.co.uk/>

The Waldringfielders email group has been great for exchanging information and giving a platform for organising many initiatives. Our Clerk Rebecca has been posting regular updates on Waldringfielders, keeping us up-to-date with the doings of East Suffolk Council, road closures and other useful stuff. You can also find news here: <http://waldringfield.onesuffolk.net/news/>
To subscribe to the email group, email:
waldringfielders-subscribe@yahoogroups.com

The Parish Council has just had its first Zoom meeting, which worked out surprisingly well, despite a few initial teething problems. During the current crisis we will continue to meet like this – details of future meetings will be posted on Waldringfielders, the village web site and the PC noticeboards in the usual way.

Norse, contractors for East Suffolk Council, informed us that they are reducing grass cutting of verges, due to Covid-19: “At the moment we have been asked by East Suffolk Council just to cut visibility splays on the verge on roadways over the district and check areas for major growth but at a reduced frequency”.

Continued on next page...

Continued...

Message from the Chairman of the Parish Council

The playing field was declared closed by East Suffolk Council as the play equipment is regarded as a possible source of infection, so they have put up notices declaring the whole area closed. The play equipment is spread throughout the site so it wasn't possible to rope it off separately, which is unfortunate but has to be endured for now. Church Field remains open.

The Parish Council has received complaints from several residents regarding cycling on the river wall. Not only is this illegal (cycling should only take place on Public Rights of Way which are designated and signed as bridleways) and a hazard to walkers, but it is likely to cause damage to the structure of the river wall.

The Clerk has been in communication with the Public Rights of Way department (part of Suffolk County Council) and we have agreed to buy and erect 'No Cycling' signs at either end of the river wall footpath. We will also erect temporary 'No Cycling' signs on two other footpaths that cyclists have been seen illegally cycling on. Details are shown on the map below.



Although many of us have had to cancel plans and forego seeing our family and friends we are at least locked down in a beautiful place and with many helpful and concerned people all around us. Do not hesitate to use the contact numbers if you have any problems.

Ian Kay, Chair of the Parish Council

Suffolk County Council Report

This was supplied on 11th May, so some information may have changed.

We must all agree that we are in unprecedented times. The freedom of movement, except for essentials, the daily interaction at work, and with neighbours and friends, is greatly missed. We have no idea what medicines can combat Covid-19, how long it will last. However, we can be uplifted by the voluntary works done by communities. I have had many comments on what parishes are doing for those in need.



Working with partners is of particular benefit. It is important that councils and organisations respond in an integrated way. This takes much organisation, but it can be done and will be of huge benefit in tackling duplication. Multi-agency working groups, such as The Suffolk Resilience Forum, are already making a difference by bringing leaders together. Many towns in Suffolk are seeing joint Fire and Police Stations.

Suffolk County Council is **delivering essential services** and is particularly keen to maintain key services. Firefighters in Suffolk are joining forces with ambulance colleagues to provide frontline care during the pandemic. 30 firefighters have been trained to work alongside paramedics. But it is all down to funding. Government gave councils £1.6bn, however this has quickly been used by increased care fees. Councils are asking for a further £1.6bn.

In January 2020, it was announced that councils in Suffolk will take on responsibility for **local parking management** from 6 April 2020. Traditionally, roadside parking offences were a matter for the Police. However, parking has become a lower priority for them, so Suffolk County Council is transferring this responsibility to local district and borough councils under a process known as civil parking enforcement, or CPE. This means each council will be responsible for issuing parking fines, warnings and notices in their area regardless of which authority manages parking.

In Suffolk, 89.04% of **adult social care locations** are rated as 'Good' or 'Outstanding' by the Care Quality Commission, the standards agency for adult care. However, Suffolk, like all other care areas, is doing its best to cope with the pandemic. Testing is being carried out on key workers, care homes and over 65s with symptoms.

The **education** of our children is a vital concern. It is understandable that parents are anxious about lessons missed but a date for return to school is uncertain. In the meantime schools should be providing homework.

Waste disposal sites in Suffolk are beginning to reopen.

Patricia O'Brien



CALLING ALL CHILDREN! Would you like to enter the Grow the Tallest Sunflower and the Tallest Runner Bean competitions? If you get in touch we will drop the seeds round to you and you can post regular photos of your plant's progress on the Greener Waldringfield site.

If we can have the Produce Show in September you could show photos or even bring the sunflower head.

We also hope to have the **PUMPKIN PARTY** – so far ahead (November) that surely it will go ahead! We need someone to grow the pumpkins and sell them on to folks in the village so that there is a really good display in November –



any volunteers? The seeds need to go into little pots very soon!

We have two varieties of pumpkin – special ones that will grow huge (if enough water).

Betsy 01473 736506 or Sue 01473 736630

'Love East Suffolk' Annual Spring Clean

Again Waldringfield participated in this, about a dozen of us (several regulars were laid low). We covered the same area as last year, but with significantly less produced. So keeping the road into the village litter-free – we know several people regularly glitch it for errant bits on their regular walks – clearly has a deterrent effect on despoilers: the pictures of last year's mammoth haul of historic grot compared with this year are instructive! The Barclays built a lovely edifice of dumped rubble in the layby by the turning to Newbourne – a monument? A barricade? A pedestal?



Waldringfield Sailing Club

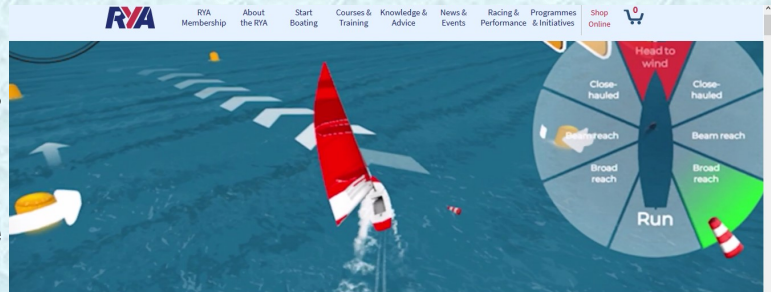
Well, this season's sailing hasn't exactly gone to plan! After one pleasant Saturday's sailing the club has closed, with just a faithful few caring for the land and the building.

Back at home, some people's boats have received extra TLC and I have heard of at least one shed of boat bits being sorted! Other members have given gardens a surprising amount of attention. In common with lots of people, some of us have learned to Zoom/Skype/Facetime, maybe for club meetings or just to keep up with fellow sailors.

Sailing has been possible too – e-sailing, courtesy of the RYA (Royal Yachting Association). I'm told that great success requires speedy fingers on the keyboard!

Now that the Government is allowing more sporting activity, people may come to sail (real boats) on their own or with members of their household. So that the club keeps in step with the Government and RYA guidelines, we now have a Covid-19 team to stay up-to-date and keep club members informed each week.

Anne Spalding (Rear Commodore)



eSailing- Virtual Regatta

e-sailing with the RYA

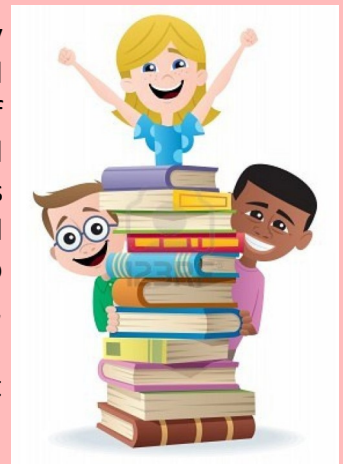
<https://www.rya.org.uk/Pages/virtual-regatta.aspx>



WALDRINGFIELD PRIMARY SCHOOL

Waldringfield Primary School has a small but very well used and loved library. Each year National Book Tokens runs a competition to win £5,000 of books for a school. This would be a phenomenal thing for our school to win. Each entry gives us one more chance in the competition, and obviously as a small school we have less pupils to do the voting than some of the big schools. So, we're asking our lovely villagers to help please!

Voting only takes a matter of seconds, and you can do it at www.nationalbooktokens.com/schools Voting closes on 31st July. Thank you!



WALDRINGFIELD HISTORY GROUP



Project 2020 Vision

You may already be aware of Waldringfield History Group's project to create a record of life in the village in 2020.

2020 is not turning out to be the year that the History Group expected to document as the Covid-19 lockdown has impacted on all our lives. Nevertheless, we have the opportunity to lay down a fascinating and poignant record of life in Waldringfield during these

challenging times for future generations.

In order to create a snapshot of families and homes, we would be most grateful if as many of you as possible could complete questionnaires which will be delivered to all residents in the village during the **week beginning 25th May**. In addition, it would be much appreciated if you could provide a photo of family members standing in front of your home. Instructions for returning forms and photos will be provided with the questionnaire.

Thank you for your help.

Waldringfield Church Field Trust

During the current pandemic I understand that people have been making good use of Church Field, which is one place where you can get some exercise while remaining at the proper distance. Hopefully families not normally together all day have been able to get up there and play a game, fly some kites or just run about! It has been looking very splendid this Spring although it has been so dry during May that it is not as lush as this time last year.

Soon there will be lots of ox eye daisies coming out and butterflies to watch out for. In April there were huge quantities of dandelions which are a very good nectar source for all kinds of bees. The gorse flowered magnificently (see pic) and was humming with insects. Now it will be concealing many birds' nests. Recently I saw a pair of linnets and a whitethroat singing enthusiastically. Skylarks are also to be seen singing over the field, and watch out for kestrels and the occasional buzzard soaring overhead.

Christine Fisher Kay



20th March 2020



6th April 2020

Waldringfield



Wildlife Group

What's Up Now? Spring News from Waldringfield Wildlife Group

WWG may have had to defer its 2020 programme of talks and excursions but during our shared experience of home and garden confinement we have been blessed with time to observe and meditate on nature unfolding this spring in our gardens and daily walks.

Frustrated by the negativity around the message of Covid-19 cancellations and missing the village social life Jill, our Group Secretary, thought about the various options to help keep our wildlife connectedness together for those who wanted to. With Peter Maddison's support it was agreed that our daily sightings of What's About? would be sent via email to subscribers as they occurred so that we could all share and look out for the events in the natural world unfolding around us. One good thing is that Spring coincided with Covid-19 'Lockdown' and despite all the drawbacks the natural world carried on doing its own marvellous thing. Peter will be publishing What's About? in its usual informative format later this year but below are a few of the sightings members shared.

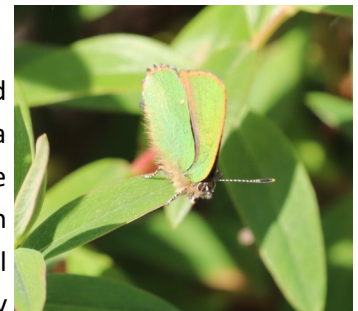
Starting off early April there were sightings of 5 Buzzards and a Red Kite circling on thermals above the village and joy at the return of the Nightingale.

10th April: 'Wondering if I was imagining Nightingale song in the woodland north of the Dairy Farm Marsh reserve' was confirmed the same day by many others along with first sightings of Swallows over Fishpond Road, and House Martins returning to their nest in Cliff Road. Despite these early arrivals, at the time of writing many contributors have commented on how few House Martins have arrived in Waldringfield this year. Hopefully with the easing of the strong northerly winds they will find their way here still.

Peacock, Comma, Brimstone, Small White, Orange Tip, Holly Blue and Speckled Wood butterflies were all spotted but Peter Maddison asks if anyone has seen a



Red Admiral or Small Tortoiseshell yet. Later we had photographic evidence of 'a pair of Green



Veined White butterflies not keeping their social distance' and a Green Hairstreak, the UK's only green butterfly. A small Copper butterfly was seen sunning itself on the heath in Suffolk Wildlife Trust's Newbourne Springs Reserve on 27th April. On 2nd May, there was a sighting of a Holly Blue in a Waldringfield Heath garden.

14th April: Nightingale heard just outside Newbourne Springs Reserve and the Cuckoo was calling briefly from towards the river.

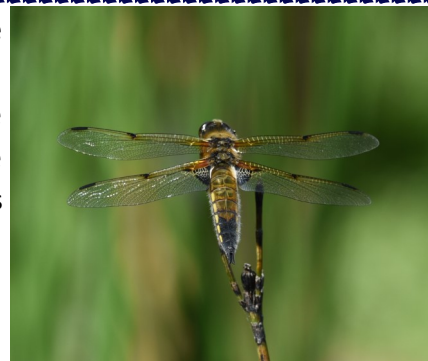
15th April: Reed Warblers heard in the reeds near Teal Island on the scrape and by 23rd April 'Reed Warblers were heard along the entire length of the reeds from the start of the Scrape to the island.'

21st April: Whimbrel calling and seen over the saltmarsh below the river wall footpath.

21st April: St Mark's flies have appeared in sheltered spots. It is a black fly that hovers over vegetation with its legs dangling and always emerges around St Mark's Day on 25th April.

25th April: 'Nightingale heard from track to Manor Cottage at rear of copse. Chiffchaff, Goldfinch, Blackbird, Dunnock and Blue Tits by path down to the river wall. Male Reed Bunting on gorse by the start of the Scrape. Nightingale heard from the same spot and Reed Warblers calling all along the scrape, Barn Owl hunting. Swallow over the river wall and in front of the sailing club. A male Blackcap behind the Sailing Club.'

By 18th May it becomes clearer that we have three Nightingales calling in the thickets by the reserve and close to the Manor. Peter Maddison notes three Nightingales calling from: 'the hedgerow by the pile of stakes, the back of the thicket at the northern end of the reserve and from close to the Manor. Once they have become busy with brooding and feeding nestlings the Nightingales will end their singing for another year so we should enjoy whilst we can.'



Towards the end of May Dragonflies and Damselflies are emerging and seen in gardens.

The Group's recent night camera purchase showed several sightings of Badgers, Muntjac and Hedgehogs in our gardens along with reports on Waldringfielders of similar sightings from other residents. Foxes were seen on the Scrape, Stoats and Weasels in Newbourne, Waldringfield Heath and in gardens on the Quay. Fallow Deer seen in nearby fields and gardens as the weeks continued.



Swifts begin to arrive early with sightings in Kirton on 30th April and BTO publishes a report ('Cuckoo Tracking Project') of Carlton the Cuckoo's arrival in the UK after a 7 day 4,000-mile flight from Africa to its home in Carlton Marshes.

5th May, Swifts arrive in Waldringfield over Lower Cliff Road, above the garden of Driftwood and Sandy Lane. WWG Members who have installed Swift boxes as new nesting spaces have deployed the audio Swift call song to attract the adult returnees whose nests may have been removed or blocked. We now await the arrival of the potential first-time breeders in their 3rd or 4th calendar year from now until the end of July. A new nest box may attract a new pair to breed if they discover it, but the chances are greatly increased if Swift calls are played at or near the nest box. Geoff Robinson, the group Treasurer, has been busy making swift boxes that can be installed below the eaves of your home based on a prototype provided by Suffolk SOS (Save Our Swifts). WWG are supporting this project as Swifts, one of the iconic birds of summer, are endangered as a breeding bird. In the past 20 years we have lost over half the Swifts breeding in Great Britain. The main problem is that they are losing their nest sites in the holes and crevices in our buildings due to redevelopment and maintenance completely blocking up the nest holes. For more information on Swift conservation and steps you can take to help conserve Swifts, contact Linda Wilkins (WWG Coordinator) or log on to www.suffolkwildlifetrust.org for their SOS Swifts Information Sheet.

Many thanks to members and residents who have taken part in What's Up?

Linda Wilkins – Coordinator of Waldringfield Wildlife Group

Photo credits: Dragonfly Peter Maddison; Hedgehog Jan Kelly; Butterflies, Fox and Badger Alexis Smith

Village Hall Winter Talks 2020-21

Trusting that meetings will by then once again be possible, I am aiming to line up a series of talks for next winter. Please let me know if you have suggestions for possible speakers (especially if you have heard they are good) and subjects (not least if they will take us out of our comfort zones).

Many thanks.

Colin Reid 01473 736506



GREENER WALDRINGFIELD

A **Sustainability Day with Repair Café** plus clothes swap, e-bikes promotion and young people's forum was held on Saturday 29th February. The success of the day gives the organisers confidence that there is much more Greener Waldringfield could do.

Ian Kay's talk on Climate Change and its impacts secured a large and responsive audience – he has been invited to repeat it for Greener Rendlesham. A smaller number attended the young people's forum (two children from the primary school's Eco-team and two young women who have grown up in the village) but we were moved by their sincerity and passion.



Clothes were swapped and a huge number moved on to another life elsewhere. While the e-bike event was compromised by the weather, a good few people got useful advice both on bikes to buy and on conversions. Much interest was shown in the 'Stuff Buddies' developing website.



In addition to the volunteers staffing the event, 61 adults paid to enter and a number of children also attended. The repairers, several most useful and talented volunteers from the village, together with those enlisted from MakerSpace by Tim Elliot, were kept busy throughout; one of them brought a plastic welding kit – not used, as how many of us know that you can weld plastic? 30 items were recorded as being repaired and 4 knives and 5 secateurs were sharpened while 8 items were deemed to be either unsuitable

or unrepairable in the limited time available. Several repair forms were not returned but it is known that at least some of these covered further items that were successfully repaired. At least two people went home to get further items for repair. There were many appreciative comments on the completed forms.



Waldringfield Village Hall Trust Lottery

A difficult time for us all...including no Coffee Mornings in April, May and June and this means no monthly draw – but you would be wrong! A little ingenuity and a draw has still taken place but the results have only been on Waldringfielders. So to bring you up-to-date:

	First £46	Second £36	Third £25	Fourth £14	Fifth £10
March	Penelope Smail	Susan Curd	Alison Thomas	Lynn Dyson-Bruce	Liz Melero
April	Mr G Evans	Bunny King	Keith Pierce	Mary Fraser	Michael Chennell
May	Roy Quantrill	C. Wellingham	Jackie Brinsley	Rosalind Erskine	Nick Lord
June	Will be drawn in the first week of June, look out on Waldringfielders!				

The lottery year ends with the June draw. Every household in the village will receive a circular from me explaining what is to happen about collecting subscriptions for the new lottery year, 1st July-30th June 2021.

Thank you everyone for your support and thanks to the collectors for the work they do. Remember, you have to be in it to win it! The Village Hall particularly needs your support this time around because of the loss of income due to the lockdown.

Stay safe.

Nigel King
Promoter, W.V.H.T. Lottery
01473 736060





SUFFOLK ACCIDENT RESCUE SERVICE

ACTIVITY

In 2019, SARS responded to more than 300 callouts across our region in 125 different locations including Trimley St Martin, Bucklesham and Martlesham. This was the fifth consecutive year in which there was an increase in the number of patients we have helped across Suffolk. We are proud of the fact that our specialist clinical volunteers provide an enhanced level of prehospital care to patients across Suffolk who are critically ill or seriously injured, and this can make a real difference to



their chances of survival and recovery. In 2019, SARS was the first medical resource to arrive at the scene in 20% of the incidents we attended. We have been able to maintain this high level of first-on-scene response for several years because our clinical resources are based in Suffolk, and a rapid response is often vital when dealing with such patients.

We have continued to develop the SARS team resource which was first established in 2014, and this complements our network of solo responders throughout the county. Throughout the year, new doctors and paramedics were given 'observer' shifts on the SARS team vehicle (SMED20) with a view to becoming team responders in 2020. The SARS team on SMED20 normally consist of Anaesthetists or Consultants in Emergency Medicine accompanied by specialist Paramedics. This mix of the advanced skills brings a level of care to patients which would not normally be possible outside the hospital environment.

CPR TRAINING



During the year, we undertook CPR training demonstrations in schools and at various events throughout the county, in order to raise awareness of the importance of this key life-saving skill to members of the public. SARS clinicians attend patients in cardiac arrest on a regular basis and we know that the prompt application of 'bystander' CPR can make a real difference in terms of the survival of patients. We aim to run these sessions for at least 1,000 people in 2020 – and all this training is provided without charge.

SARS was a key partner in the 2019 'Learn to be a Lifesaver' campaign

EXPENDITURE

SARS relies on voluntary grants and donations to support its work and we receive no funding from central government. Donations helped fund some key items of equipment in 2019, including an ultrasound device for our team vehicle and two new high-spec monitors for SARS solo responders. The outlay for these items alone was over £22,000. Other expenditure included training in surgical skills for 20 clinicians, new equipment bags, personal protective equipment (PPE), specialist drugs and the fitting of emergency lights to responders' vehicles. As we take on more volunteer clinicians, running costs will rise, and we are very grateful for the continued support of the local community which has helped us expand in a sustainable way.

FUTURE PLANS

In late 2019, we successfully applied for funding to help cover the costs of an additional team vehicle, and SMED26 will become operational during 2020. Our new group of clinicians will undergo their final phase of training prior to becoming established team responders, and we are aiming to provide at least 100 team shifts in 2020. In the long term, we hope to be able to run each of our team vehicles concurrently in east & west Suffolk and, in so doing, increase the provision of advanced prehospital care to those who need it within our county, and in surrounding areas.

SARS receives no funding from central government, so we will continue to be reliant on groups and individuals within the Suffolk community to help us build up our resources and treat more patients. Our charity has traditionally run on a relatively low level of income due to the generosity and commitment of our wonderful clinicians who give up their time and provide their skills without charge. This 'donation' of time equates to many hundreds-of-thousands of pounds each year, and the benefit that SARS clinicians can bring to a patient in terms of life-saving interventions, relief from pain and quicker recovery times is immeasurable.

We do still need support to help cover some of our ongoing running costs in terms of equipment, training, clinical governance, etc. We are very appreciative of any assistance.

If you require any further information, then please do not hesitate to contact us at SARS HQ.



www.sars999.org.uk

Registered Charity Number: 1168764

**Unit 1b, Woolpit Business Park, Windmill Avenue, Woolpit, Bury St Edmunds IP30 9UP
Main Office Tel: 01359 244186 - Email: admin@sars999.org.uk**

St Elizabeth Hospice News Release

HERE TOGETHER: TODAY AND TOMORROW

St Elizabeth Hospice launches urgent appeal for support



While preparing to cope with the impact of Coronavirus on its end of life care and bereavement services over the coming weeks, St Elizabeth Hospice has launched an urgent appeal to the public to support their local hospice in light of all fundraising events being postponed and all 31 retail shops closing.

The clinical staff at St Elizabeth are working in partnership with the NHS and partners at speed to significantly expand our services both in the community and at the hospice in response to Coronavirus, whilst continuing to care for patients with non-Covid end of life and palliative care needs.

A new rapid response co-ordination centre has been created in the past week to cope with the expected increase in demand for clinical advice and end of life care in the community, doubling the capacity of the hospice's existing OneCall telephone advice helpline.

Last year, the hospice cared for over 3,000 Suffolk patients and their families at a cost of £10.5m, of which 75% was raised by the community through the shops and local fundraising – income-generating activities which are now impossible due to social distancing and self-isolation.

Chief Executive Ru Watkins has called on the local community to support the hospice's new "Here Together" appeal to highlight the role of St Elizabeth at the clinical frontline of the current pandemic and to make sure that its end of life care can continue unaffected when the crisis is over: "Every family who has come into contact with our consultants, doctors, nurses, carers and volunteers over the years knows how dedicated they are to our local community. We are still here with our patients delivering the care they need today so ask everyone to support our efforts together."

With all fundraising events postponed or cancelled, many supporters are looking for alternative ways to support the hospice. As local supporter Wendy Goddard says, "St Elizabeth Hospice was there for me and my family when my daughter Zoe sadly passed away and their support was outstanding. Last month I was due to hold a Charity Night for 300 people to raise funds to support the hospice but sadly this has had to be postponed. I would ask you to do what you can in this time of need to support our local hospice together."

The "Here Together" appeal is being launched across the hospice's social media platforms to raise awareness of St Elizabeth's frontline role in continuing to care for some of Suffolk's most vulnerable patients throughout the pandemic and our shared commitment as a community to protecting its vital services today and tomorrow.

To donate to the appeal, visit the hospice Just Giving appeal page <https://www.justgiving.com/campaign/SEHCoronavirusAppeal> or call the hospice on 01473 723600.

To find out how to get involved or fundraise for us then please contact your hospice community fundraiser, Beth Condie at beth.condie@stelizabethhospice.org.uk or call 07900 653972.

St Elizabeth Hospice improves life for people in east Suffolk and Great Yarmouth and Waveney, living with a progressive or terminal illness. Our work is centred on an individual's needs, which means specialist support, whenever and wherever it is needed, whether at home, in the community or at the hospice. Through medicine and therapy we ease pain; we give life purpose and make life liveable.

OneCall clinical and medical advice line

OneCall is the hospice telephone line for clinical or medical advice about your illness. The service is available 24 hours a day, seven days a week. We can advise regarding the sudden and unexpected onset of symptoms or difficulties relating to illness. We can give advice over the telephone, or liaise with other healthcare professionals such as your GP, district nurse or out of hours service to coordinate care. If required, we may come and visit you at home. The number is 0800 56 70 111. This phone number is for enquiries relating to illness, it is not a general information line.

Face Shields

Waldringfield responded magnificently to a call for volunteers to help in the present crisis. Our friends at Ipswich Makerspace had started making Personal Protection Equipment (PPE), in the form of clear face shields, and were providing them to organisations that could not get 'official' equipment. Over 30 Waldringfielders volunteered to assemble kits of parts into finished face shields, so that volunteer drivers could deliver them to organisations that needed them. Materials were paid for by donations to a JustGiving page.

Results so far: over 12,000 face shields were cut at Ipswich Makerspace, of these at least 5,700 were assembled in Waldringfield. We established four assembly hubs – Waldringfield, Woodbridge, Great Wenham and Lowestoft. Over 100 organisations were supplied, including: Ipswich Hospital (approved by Infection Control); Ipswich Hospital's outlying departments; Kent and Essex ambulances; St Elizabeth's Hospice; East Anglian Children's Hospice; East Anglian Air Ambulance; Suffolk Accident Rescue Service; Out-of-Hours GP Service; GP and dentist surgeries; MENCAP; care homes throughout Suffolk; and Ipswich Buses.

Production has now been paused, as demand locally has been falling off, and government regulations are making this legally hard or expensive to continue. Ipswich Makerspace will be ready to step in, if demand returns; we have all learnt much about how to do this from our experiences. A stock of kits is available if required.

**Do you want to make a difference and be involved in shaping the future of the local community?*

**Are you concerned about your local area and want to support the community?*

**Do you want to represent the views of local people and ensure that community interests are taken into account?*

**Do you have time or expertise which could benefit your community?*

If so, there are currently **2 vacancies on Waldringfield Parish Council**. If you are interested in becoming a Parish Councillor, please contact the Clerk to register your interest. For more information, visit <https://beacouncillor.co.uk/>

WALDRINGFIELD PARISH COUNCIL

Your Parish Councillors:

Ian Kay (Chair)
Janet Elliot (Vice Chair) Serena Gold
Colin Reid Colin Archer
Chris Lyon Frances Matheson

To contact the Clerk:

Rebecca Todd
5 St George's Terrace, Church Road,
Felixstowe IP11 9ND
Telephone: 01394 271551
E-mail: pc.waldringfield@googlemail.com

Next meeting: 9th June

This will be via Zoom (video conferencing), so please contact the Clerk if you wish to 'attend' and you will be sent the code.

Meeting Dates for 2020

9th June, 14th July, 11th August,
8th September, 13th October,
10th November, 8th December

**ALL PARISH COUNCIL MEETINGS ARE OPEN
TO THE PUBLIC**

SEE YOUR ADVERT HERE

**TO ADVERTISE FOR AS LITTLE AS £12 PER
QUARTERLY ISSUE**

CONTACT THE PARISH CLERK

pc.waldringfield@googlemail.com

Next Copy Date – 14th August

(for publication 1st September)