

No. 53 - Autumn 2016



Harvest Supper

Waldringfield Village Hall

Saturday 8th October.

The Panto this year is *A Ladd in Trouble*.

It promises to be another wonderful evening of good food and good fun.

Tickets are now on sale from the Post Office van - Monday, Wednesday or Friday 11-1. Or if you can't get to the van, order from me (Trish Eaton) on 736754.

We are pleased to be offering tickets at the same price as last year. Adults £10, children up to 15 years £5 or the family ticket, for 2 adults + 2 children under 15, for £25.



**Black&White Productions
and Quay Place present**



**CHANGING FACES
HIDDEN LIVES**
by **Suzanne Hawkes**

*A journey through the past and present
of St Mary at The Quay and mental wellbeing*

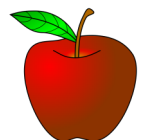
Thurs 22nd Sept
Waldringfield Village Hall
7.30pm

Tickets: £12/£10 01394 279613
or Abbeygate Lighting, Felixstowe

An apple glut? Making wine this year? Too many tomatoes and run out of freezer space?

The WALGA Community Fruit Preserving Equipment is yours to hire for just £5 per suite - that's the special WG (Waldringfield Gardeners) members discount - your annual membership covers multiple uses.

You can juice your apples, sterilise the juice thirteen bottles at a time, pulp grapes or other fruit and bottle tomatoes etc 14 bottles at a go: it's so easy, just pack the fruit in, set the timer and the temperature according to the chart and go to bed. Bottled fruit lasts for years.



For details, go to the onesuffolk website or contact Betsy Reid betsyr@talk21.com

Waldringfield Sailing Club



Our "season" runs from March to November but there is no doubt that the end of July and first half of August is a busy period at WSC. We squeeze in the Regatta, Cadet week and Junior training plus all the "normal" Wednesday and Saturday racing and social sailing sessions. The weather has been brilliant and so it has been a fantastic few weeks - champagne sailing!

The Yachtsman's Service was also blessed with great weather. What could be nicer on a sunny



Sunday evening than singing a few hymns, accompanied by the excellent Excelsior brass band, with the glorious river Deben as a backdrop.

This has now been running continuously for over 60 years and Dorne Prettyman-Waller does a brilliant job of organising it every year.

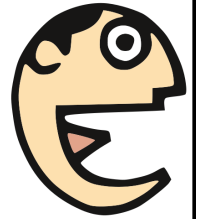
This year we have increased the number of "social sailing" sessions. These have been taking place on Friday evenings and Saturday mornings. There's no racing, just an opportunity to go out for a sail (with supervision and instruction) and/or have a drink or a bite and chat at the club.

Non-members and beginners are welcome, old or young (or in-between), so come and give sailing a try. We are going to keep these going through to the Autumn. Please let me know if you would like to give it a go.

The Regatta, Yachtsman's service and other events are also open to non-members.

Bob Whitehouse
commodore@waldringfieldsc.com

Don't forget that the **Winter Talks** return in November - the first Thursday of each month at the Village Hall at 7.30 pm.....



EXCEPT, PLEASE NOTE that the first will be on the second Thursday, November 10th.

PETER WAIN will talk to us on his particular interest -The medieval port of Goseford - find out more about the intriguing history of the down-river Deben in earlier times.

Gareth Thomas (811745)



The PCC and Chief Constable have arranged public meetings to give a local policing update with an opportunity for Q&A.

There is no need to book. The full public meeting schedule can be found on the web link below.

www.suffolk-pcc.gov.uk/public-meetings/public-meetings-2016

If anyone is cutting their lavender flowers off, Waldringfield Primary School would be very grateful for the flowers to make lavender bags, etc. for their Christmas Fair.



Many thanks,
Betsy Reid

RECRUITING NOW !

Anybody interested in having a laugh by helping with or taking part in the Pantomime, *A Ladd in Trouble*, at the Harvest Supper on Saturday October 8th - please contact me, Gareth Thomas, (811745) or David Eaton (736754)


**KEEP
CALM
WE'RE
JUST
ACTING**



Hedgehogs and Butterflies

Hedgehogs have been seen in Waldringfield! As the hedgehog travels about 2 km on its nightly round looking for food, it probably goes through YOUR garden at some point! Are you blocking them out with fencing and low gates? If you can make a small gap of 125mm (5") square in your fence, they will be able to access your garden on their nightly prowl and hopefully polish off some of those slugs and snails which are rampant at the moment.

During the day, hedgehogs lie up in a daytime nest; e.g. under brambles or in a hedge bottom. So please watch out when strimming. The more hedges around the better for hedgehogs and wildlife in general. The hedge bottom is a good place to leave a bit of long grass where hedgehogs can lurk and also find food. Is it possible to leave other odd corners of long grass for the benefit of moths and butterflies? Many of their caterpillars need grasses as their food plants and it also makes foraging areas for song thrushes and other insect eaters (such as hedgehogs) to find their natural food in.



**Trusted by
local families
since 1925**



47 St. Helens Street
Ipswich
01473 257242
64 New Street
Woodbridge
01394 385456



Funeral Services
eastofengland.coop/funerals



This is one of the 'tips' for helping butterflies displayed at the Natural History Museum in London where they recently had an interactive butterfly display. For more about hedgehogs see www.hedgehogstreet.org

for lots of photos and information.

Christine Fisher Kay

On behalf of Waldringfield Wildlife Group

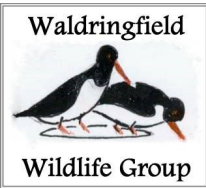


October 3rd

Morning visit to Landguard Reserve & Bird Observatory to observe ringing of migratory birds with specialist Nigel Odin. *Meet 8am, car park opposite Landguard fort.*

October 8^h

AGM followed by Suffolk Spiders by Alan Thornhill, retired entomologist and keen arachnologist, member of the British Arachnological Society.



November 29th

Guided Tour of Lackford Lakes 2 – 4pm with Mike Andrews. Winter roosting birds, gull and starling pre roost murmuration.

Waldringfield Church Field Trust

By the time you receive this bulletin, there should be some work going on in the small car park at Church Field to sort out the drainage problem. This is due to begin the week starting 22nd of August. The car park will, of course, not be available during the work.

The playing area and paths have been mowed by most helpful volunteers Duncan and Paul and, more recently, by Norse grounds maintenance. The original noticeboard was in need of some restoration work, which was carried out by Ian.

There seems to have been less skylark activity this year - correct me if I am wrong, but I have not noticed the skylarks singing so much as in previous years. The kestrel is often



seen and there was a red kite over the lower end of the field in early August. We are still seeing a lot of butterflies, such as meadow browns, gatekeepers and small skippers, plus dragonflies and blue damselflies. There has been a huge variety of wild flowers through the summer, creating an ever-changing display with the grasses, all self sown.

Duncan Andrews is no longer running a football club on Saturdays but, of course, the facility is there for anyone who wants to use it.

There will be work parties on October 11th and 21st February, with volunteers from the AONB, which anyone is welcome to join in with. These will include jobs at Church Field, such as clearing round the hedgerow trees, with other tasks in the village. More information will be announced nearer the time and on *waldringfielders*.

Christine Fisher Kay



Some thoughts from the Greener Waldringfield Team

The Importance of having Healthy Soil - What Can We Do to Take Care of Our Soil.

Healthy soil is the foundation of healthy and abundant plant and animal life and so much of it is subject to erosion and degradation. What are we doing locally – and could we do more?

Degradation: To minimise degradation of our soil, it is essential to keep those soil microbiota flourishing. In February 2016, the Parish Council endorsed a motion from the Wildlife Group that there should be no pesticides used on public land in the village.

Council contractors have routinely used glyphosate on the verges of Village Way, but this should soon stop. Glyphosate is now thought to be carcinogenic to humans and it is harmful to earthworms, commonly regarded as the 'canaries' of soil health, as is well-documented. It was relicensed recently by the European Commission, but for 18 months rather than the routine 15 years.

The Waldringfield Wildlife Group have made some suggestions for weed control in domestic gardens:

<http://www.greenerwaldringfield.org/pesticide-free-gardening/4592555651>

You may have suggestions to make based on your experience. Please contribute your thoughts on the 'Greener Waldringfield' Facebook page or contact the Waldringfield Wildlife Group, so that we can include your suggestions in future editions of the parish magazine and we can also add your comments on the Greener Waldringfield website.

Remedy degradation: The single biggest thing you can do to revive soil is add compost. Compost has a half-life of just two years, which is not depressing at all, but just an indicator that all vegetation should be returned to the soil from which it came. If it was, you would not need to buy in any expensive nutrients. Share your composting thoughts on the 'Greener Waldringfield' Facebook page, or get in touch directly with Waldringfield Community Composting.

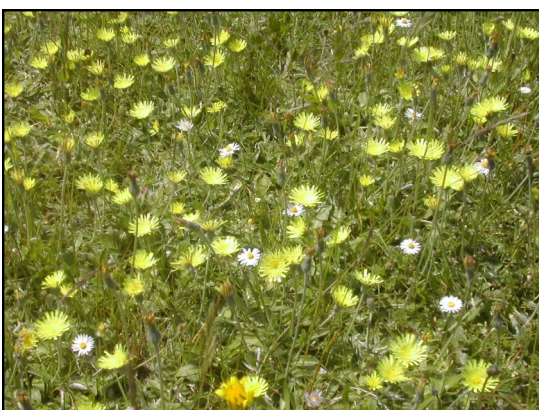


Waldringfield Community Composting

Low Fertility:

Let local soils do what they do best – low fertility brings lots of wild flowers.

Where we do not want to grow crops or luscious gar-



den plants, let soils revert to low fertility. Church Field is a wonderful example of the diversity of



wildflowers in the soil seedbank. The ranker plants have reduced, leaving room for a diversity none of which is strong enough to out-compete the others.

Invasive aliens threaten local distinctiveness

Alexanders have made their way into the village. It's not on Schedule 9 of the Wildlife and Countryside Act 1981 (under which it's an offence to plant or grow invasive non-native plants in the wild) though a close relative, Perfoliate Alexander is. Observation has shown that it will rapidly smother the pretty daffodils and snowdrops planted in the verge opposite the school. Last spring, a few members of Waldringfield Wildlife Group reduced the patches of new seedlings, as recommended by the AONB. Please let WWG know or use the GW Facebook page when you see it in the village and if you have been able to take action.

Allium Triquetrum is on Schedule 9 however. Again, it out competes our spring natives, violets and primroses, and when it dies back in the summer leaves ugly bare pitches subject to erosion. Its seeds are loved by ants, so it spreads widely. Schedule 9 means you should dig it out in the wild. All parts are edible – the flowers are especially nice in salads, but beware what you wish for if you have it your garden.

Spanish bluebell has similarly invasive qualities although, interestingly not on Schedule 9, but Plant life International's 2003 Survey indicated that one in six native bluebell woods have hybridised bluebells. Bees and other insects love it and spread the pollen widely, so if we want those sheets of native bluebells, delicate and scented, Plantlife recommends getting rid of the Spanish ones. On the up-side are the plantings of pollinator friendly flowers in the triangle by the village hall (from FlowerScape seeds sown by children from the school) and a patch on the path to the Manor.

If you have sown any of these seeds, as many WWG members have for three years now, or have a patch of good natives, please share your photos and collect native seeds.

Recent evidence is that plants adapt to local conditions so what's local will grow best. Please give your seeds to Christine Fisher Kay to distribute.



BeeWalk

Betsy Reid has done the Bumblebee Conservation Trust Bee Walk since March 2016 (excluding August) but seen very few bumbles outside her own garden where the walk starts. Her records are not up to date, and she probably will need help



www.greenerwaldringfield.org

Twitter: @GreenerWald or Facebook:
'Greener Waldringfield'



SIGN UP AND GET CONNECTED WITH POLICE CONNECT

Police Connect is a free messaging service connecting you to the very latest policing news for your area via email, text or phone.

Operated by Norfolk and Suffolk Constabularies, Police Connect will provide you with localised information in a variety of situations including emergency alerts, missing people appeals, crime reports, neighbourhood policing news and events.

To register, fill in the form on the reverse of this leaflet and hand it in at a police station or post to:
Suffolk Police Community Safety Unit
 Landmark House
 Ipswich IP1 5PF

You can also register online at
norfolk.police.uk/policeconnect
suffolk.police.uk/policeconnect

POLICE CONNECT
Keeping you informed, keeping your community safe



POLICE CONNECT

MY DETAILS:
 Name:
 Are you associated with Home Watch / Neighbourhood Watch?
 No Yes, I'm a Co-ordinator Yes, I'm a member
 Are you a parish / community newsletter editor? No Yes

I WOULD LIKE TO BE NOTIFIED BY:
 You can choose to receive alerts by email, text or voicemail on a landline. Please select and provide your preferred contact details (e.g. if you would like to receive email only, tick email box and provide your email address only).
 Email:
 SMS text:
 Phone call:

I WOULD LIKE TO KNOW ABOUT CRIME INFO & APPEALS FOR WHERE I LIVE. MY ADDRESS IS:

POSTCODE

You can register additional locations (up to a total of five across Norfolk and Suffolk) to receive alerts for. This may include the area where you live or work or where an elderly relative lives. If you would like to register additional addresses, please register online (norfolk.police.uk/policeconnect or suffolk.police.uk/policeconnect) or call the Police Connect team on 01473 613997.

I WOULD LIKE TO RECEIVE NOTIFICATIONS ON:
 Crime info & appeals Meetings & events Rural crime
 Rivers & coastal crime Safety advice Police & Crime Commissioner

ARE YOU A BUSINESS?
 If you would like to receive alerts to help keep you informed, please tick your business area below.
 Faith and religion
 Industrial
 Leisure and tourism
 Retail
 Night-time economy
 Other business

YOUR INFORMATION
 We would like you to tell us a little about yourself so that we can understand the users of Police Connect. Please note that in no circumstances will your personal details be shared with external third parties for marketing or other commercial purposes.

Gender: Male Female
 Age: 18-25 26-35
 36-50 51-65
 Over 65

OR GO TO www.waldringfield.onesuffolk.net/news/police-connect-service/

MARTLESHAM HEATH GP SURGERY - PRACTICE & PATIENT GROUP

Martlesham Heath Surgery has a Practice & Patient Group comprising the Practice Manager and a small number of patients. We discuss issues that the Practice want to share with patients and also feedback from patients' perspective; we have also carried out patient surveys and produced action plans for improvements to benefit patients.

However, we are now hoping to set up a "virtual group" and aim to gather around a hundred patients from as broad a spectrum as possible to get a better representation of views, so we need young people, workers, retirees, people with long term conditions and people from all ethnic groups. We will ask the members of this group some questions from time to time.



If you are willing to get involved, contact will be via email so it shouldn't take too much of your time. If you are happy to become a member of this virtual group and for us to contact you occasionally, please send an email to

IESCCG.MartleshamHeathSurgery@nhs.net

confirming that you are interesting in becoming involved. Thank you.

FLU CLINIC

A flu vaccination clinic will be held at Martlesham Heath Surgery on Wednesday 28th September between 1-6pm for all eligible patients. **NO APPOINTMENT** necessary.



**COME FOR
COFFEE AND
CAKE**



Do join us in Waldringfield Village Hall as part of the

World's Biggest Coffee Morning

On: Friday 30th September 2016

From: 10am-12noon, and raise funds for Macmillan.

Freshly brewed tea and coffee, homemade cakes, raffle, books, bring & buy, hats, scarves, jewellery and bags for sale, gifts from the Boatyard shop, and more

Do come – and bring a friend or two! We look forward to seeing you there.

Chris Lyon (01473 736291) – on behalf of The Coffee Morning Team

Waldringfield Flood Defence Group Saltmarsh Restoration and Protection Works

This summer residents and visitors have been enjoying the new riverside footpath and the view over the nature reserve. The seeded areas have now grassed over and several species have settled in on the scrape. Recently, a sizeable shell duck crèche has been sighted. Both the Waldringfield Flood Defence Group and Peter Maddison, who compiles 'What's About', are keen to be notified of sightings. Photos too are welcome to these email addresses: jbrownmace@btinternet.com for the WFDG, and prmaddison@yahoo.co.uk for What's About.

Saltmarsh Works

The saltmarsh at the base of the river wall and new footpath is badly eroded in places. This needs to be preserved, not just as a habitat for wildlife and plants, but because it protects the seawall and the footpath itself from erosion. Work on installing polderwork in selected areas of the saltmarsh has been ongoing over the summer.

Karen Thomas, Project Manager, reports on progress:

The Saltings restoration work is now in its final phase. The final delivery of materials will be at the end of August, and work is scheduled to finish by October.

The initial works to the toe of the section either side of the sluice were completed first and this work is settling in well. This fencing was designed to create a low 'wall' in front of the remaining fringe of saltmarsh with a view to slow erosion to the remaining marsh and promote accretion behind the fence.

We have created some 'groynes' coming off the main fence line to slow flows as the water ebbs out of the large man-made channel area.

The work at the northern end where we have the worst 'fragmentation' of marshes has been completed and this takes the form of an additional row of fencing parallel to the 2015 works as well as some cross-walls to try and reduce flows. In this area, we have tried to create a couple of 'raised beds' where there is a watershed between creeks with the view that if we can build up the sediment into a hump, the flows can no longer meet in the middle. This reduces erosion.

The next step is to move south and undertake localised protection within the marshes just offshore from the sluice.

This will involve closing off bays to create 'stilling ponds' which we hope will accrete and generate new marsh.

The whole site has now been surveyed with a GPS drone so we have a good baseline for future years' monitoring. The initial six-month monitoring results from the 2015 polderwork has shown 7-10mm siltation behind the fencing with no change on the marsh outside. This is a significant result, especially over a winter monitoring period, and gives an indication of what we might expect elsewhere on the marsh where polders are in place.

Karen Thomas, Project Manager for Broads, East Suffolk & Norfolk Rivers Internal Drainage Boards



River Deben Association Shore Crab Pilot Study

There is a view that tunnelling shore crabs might be a major factor in saltmarsh erosion, and the River Deben Association began a four-year pilot study at Waldringfield to investigate this. Measuring equipment was installed on the saltmarsh in June, and measurements of sedimentation rates will continue every four months. This is completely separate from the WFDG saltmarsh work, although the results, of course, will be of great interest.

In Conclusion

The WFDG would like to thank all those who have contributed to the costs of our saltmarsh work. This has been funded by a major grant from the Coastal Communities Fund. We have also received grants from The Suffolk Coast & Heaths Area of Outstanding Natural Beauty Unit, Councillor Patricia O'Brien and Waldringfield Parish Council.

The River Deben Association contributed to the cost of the Marine Maritime Organisation (MMO) Licence needed for both the WFDG saltmarsh work and the RDA pilot study.

A complete archive of the WFDG's flood defence work dating back to the flood surge of December 2013 is on our website, overseen by Donna Morgan

(www.waldringfieldflooddefencegroup.onesuffolk.net).

Janette Brown, Committee Secretary, WFDG

The Waldringfield Gardeners Produce, Flower & Craft Show was held in the Village Hall on Saturday 20 August.

We had a nice turnout of vegetables, cakes, flowers, pictures and craft items.

The overall points winner was Betsy Reid with a good selection of unusual veg, as well as the normal ones, with Jane Spall a very close 2nd and Ian Kay in 3rd, not far behind them.

Jane's picture 'A view in the village' was voted the 'Peoples Choice' as the favourite item there by the visitors. Chris Lyon's Victoria Sponge was the Judges' choice for the best 'Domestic Produce', Lynn Dyson-Bruce's Crocheted Jacket for the best 'Hand Made Craft Item', Teresa Baldry's Courgettes were the best 'Vegetable' and Caroline Lucy's mixed fruits were the best 'Fruit'.

The youngest entrant was Bea Quantrill who, at 13 years, did very well getting a 1st with her 'Cups Cakes', which the Judges said were excellent and tasted wonderful; she also got a 2nd and two 3rds with her other entries.



**Best Decorated Cake
Jane Spall**

The Fruit Cake was won by Roy Quantrill, Bea's Grandfather, so baking runs in the family!

Everyone went home with bargains of organic produce and home baking from our auction at the end of the day.

Waldringfield Gardeners would like to thank everyone who helped us set up during the day and clear up at the finish - it was a very long day for some of us. Special thanks go to Jane Spall who was there the whole day helping me! Thanks also to everyone who supported us with their entries.

Any suggestions for other classes, please contact Alexis g1dik@btinternet.com or 736257

Mobile Shop

A mobile shop now comes to the village every Tuesday. It stops in Village Way between 10.00 and 10.25.

It is very well-supplied – bread, milk, fruit, vegetables, cold meats, groceries, cleaning and even bird food !

Orders can also be taken. Support for this facility would be very welcome



Classical Concert



by the Kingfisher Ensemble will be on **Sunday November 6th**.

Please put the date in your diaries and watch out for further information

Liz Kennedy

Launch of the new national power cut phone line – 105

The number, which is available to electricity customers in England, Scotland and Wales, will enable people to report or get information about power cuts as well as report damage to electricity power lines and substations that could put themselves, or someone else, in danger.

105 is funded and delivered by the electricity network operators, and is a first for the UK's energy industry. As well as calling 105, people can find more information on the website: www.powercut105.com

SUFFOLK COUNTY COUNCIL

We are coming to the end of the summer period and thus there is not a great deal to report, except for the issue of devolution. The consultation period has just ended and it will be interesting to see the comments from the public.

Below is listed the proposal:

Key elements of proposed Norfolk/Suffolk deal are:

- £25m funding each year for the next 30 years (£750m) to support economic growth, development of local infrastructure and jobs (this will increase the local economy to £43bn and create 95,000 jobs by 2026)
- £130m investment over five years to support the building of new homes across Norfolk and Suffolk. Over the lifetime of the deal, around 200,000 homes could be delivered.
- Control of a £225m transport budget for the next four years
- Control of an existing c£20m annual adult skills fund to ensure the training offer matches the needs of local businesses and the local labour market
- Control of an existing c£2m annual Apprenticeship Grant for employers

As part of the consultation, people have been asked for their views on more decisions being taken locally, rather than at central government, and whether they support the creation of a combined authority chaired by a directly elected Mayor for the two counties. Personally, I would have more enthusiasm for devolution if Cambridge had been part of the proposal, as was originally mooted.

I have been dealing with local issues, particularly in relation to overgrown verges, hedges, potholes, on the highway. There have also been **Highway** issues that have taken a long time to resolve but, happily, are being addressed.

There is good news in relation to **education** in Suffolk. At last, schools in Suffolk are improving, and 80% are deemed either good or outstanding. It has been a long haul but the improvements SCC has been initiating, through the Raising the Bar program, are showing results.

I have attended a recent Safer Neighbourhood Team meeting, plus chaired a workshop for the **Police** & Crime Panel and, at both of these, the most crucial issue, as far as I gauged, was communication. There is so much change and it is vital that the public are aware of what is happening. The highest concern regarded the new policing model that has reduced SNTs from 29 to 18 and removed 68 PCSO posts. However, the PCC is holding meetings in each of the 18 SNT areas. The new data recording system, ATHENA, is complete, but not without teething troubles.

The following day, I had an informal meeting with Tim Passmore and communication was the main topic under review. I accompanied Therese Coffey on her tour to most of the parishes in my division on 30th August.



Waldringfield Parish Council

PARISH COUNCIL MEETING DATES

Tuesdays. 7.30 pm in the Village Hall,
Kennedy Room.

Remaining Meetings in 2016: September 20, October 11, November 8, December 13.

ALL PARISH COUNCIL MEETINGS ARE OPEN TO THE PUBLIC and there is an opportunity at these meetings to put information to the Council and ask questions. If anyone wishes to see planning applications, report problems, etc., please contact the Clerk to arrange it.

Contacting the Council:

In writing to:

**The Clerk, Waldringfield Parish Council,
43 Fourth Avenue, Frinton-on-Sea ,
Essex CO13 9DY**

Telephone: **01255 678 888** (with voicemail)

E-Mail : pc.waldringfield@googlemail.com

Your Parish Councillors:

Ian Kay (Chairman)

Alyson Videlo (Deputy) Frances Matheson

Serena Gold Janet Elliot Colin Archer

Neil Winship Colin Reid Toby Harraway

Website:

www.waldringfield.onesuffolk.net

**An enlarged version of this newsletter is
available on the website**

**Please accept our apologies for the
late publication of this edition**

Bags of Help



Grants Scheme

Grants are awarded to voluntary or community organisations (including registered charities/companies), schools, Parish/Town Councils and local authorities, health bodies (e.g. Clinical Commissioning Groups (CCGs), NHS Hospital Trust, Foundation Trust), and social housing providers. (N.B. there will be many other types of organisations that will be funded.)

The Bags of Help scheme is now permanently open for applications and has opened up to a greater range of projects that support community participation in the development and use of open spaces.

As well as physical improvements of open spaces – such as building new pocket parks, sports facilities, woodland walks and community gardens – projects that will now get the green light will include volunteer training, equipment purchases, community events and sports and leisure activities.

Following a public vote, three projects in each region will now receive a grant each month, with first place receiving up to £5,000, second place up to £2,000 and third place up to £1,000. Please note the maximum amount you can now apply for is £5,000. **To apply or nominate a project, or to find out more, search for *Tesco Bags of Help* on the web.** If you have questions that aren't answered by the information on the website, or you'd like some extra support, get in touch with your local Community Enabler:

**Victoria Rudd, 07736 132873 or
victoria.rudd@groundwork.org.uk**